

**VPN
Server**
Suite

Interoperability: Shiva VPN Client to NetMAX VPN Server

Date: 11/8/00

Steps required to configure the Shiva VPN Client Version 6.80 (Build# 040731-1156) -the current release at the time of this writing- to NetMAX VPN server.

Conventions Used in This Document:

Throughout this document, several conventions will be used in order to simplify the explanation and understanding of the procedure described herein.

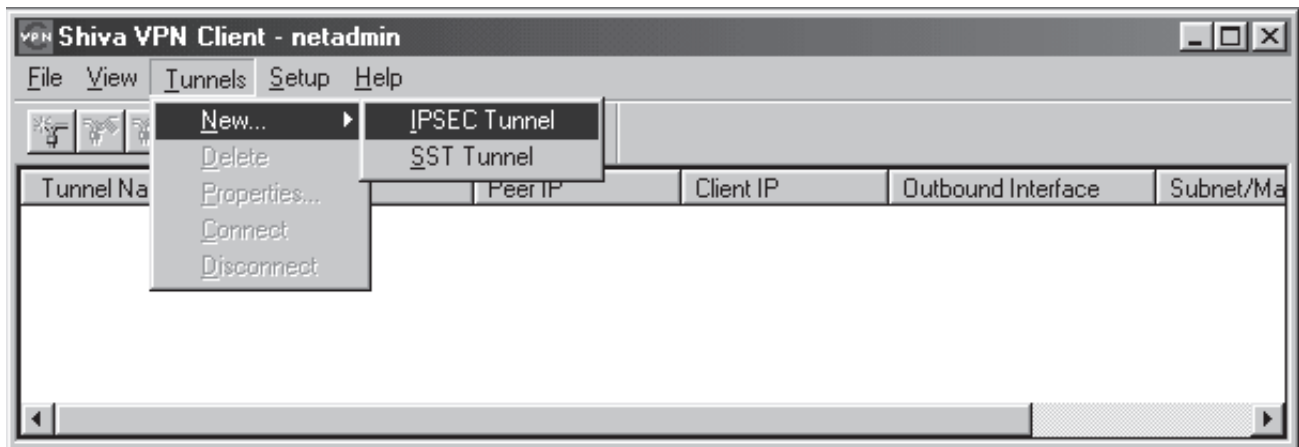
Items that are to be input by the user are signified by using the helvetica font. (e.g. localgateway)
Such items often vary from installation to installation, and need to be replaced by the appropriate value when following this procedure unless otherwise specified.

Items that are presented by the Shiva VPN client software to the operator, such as menu items, and form field names, are signified in bold text. (e.g. Tunnel properties for:)
These items have preset values and will appear in the Shiva VPN client software exactly as specified.

1.

Step I.1:

Open the Shiva VPN Client and log in.
Select Tunnels -> New -> IPSEC Tunnel



Step I.2:

Enter the following information in the General tab, replacing the provided values with those appropriate to your configuration:

Tunnel properties for:

NetMAXVPN

VPN Gateway IP Addresses or domain names:

192.168.1.1

User Identifier:

roadie@netmaxvpn.net

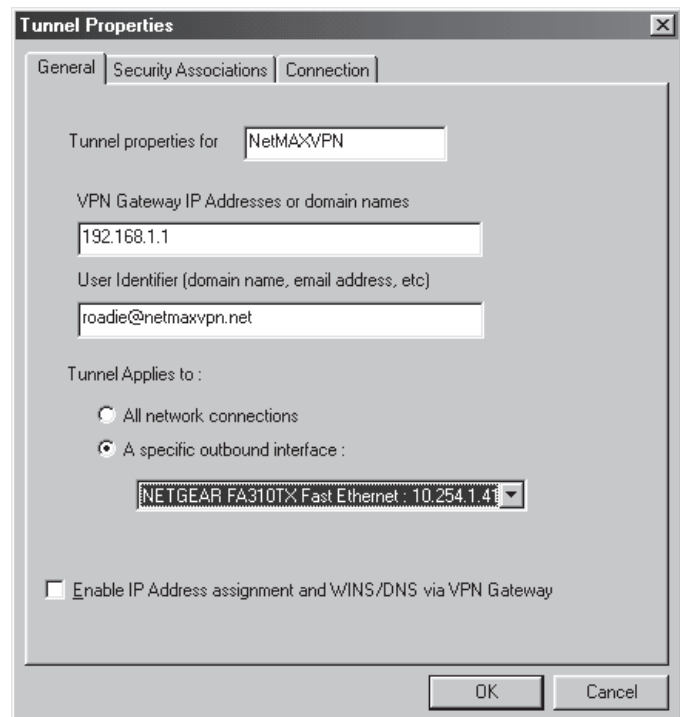
Select A specific outbound interface: under Tunnel

Applies to:

Select the appropriate network interface from the pull-down menu.

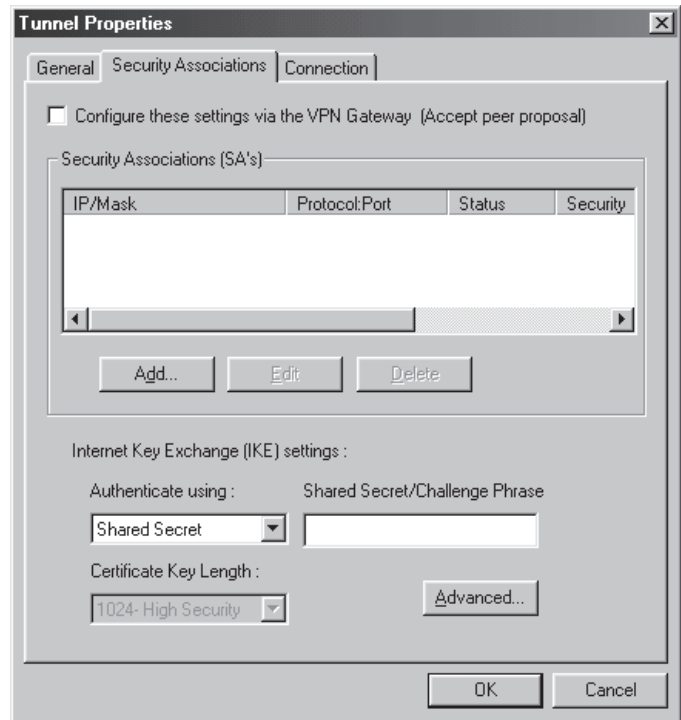
This is the card that will be communicating directly with the NetMAX VPN server.

Remove the check from Enable IP Address assignment and WINS/DNS via VPN Gateway if present



Step I.3:

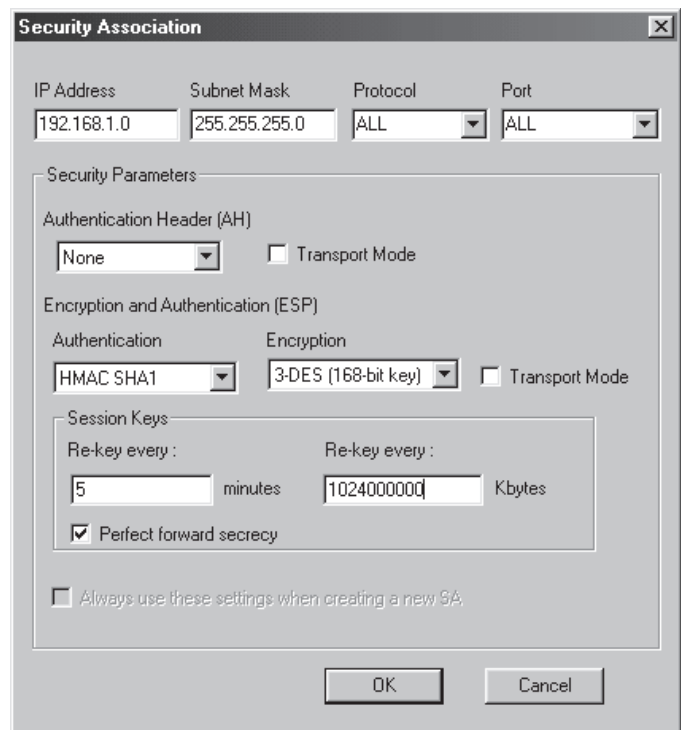
Click the Security Associations tab.
 Remove the check from Configure these settings via the VPN Gateway if present.
 Click the Add button.

**Step I.4:**

Enter the following information:

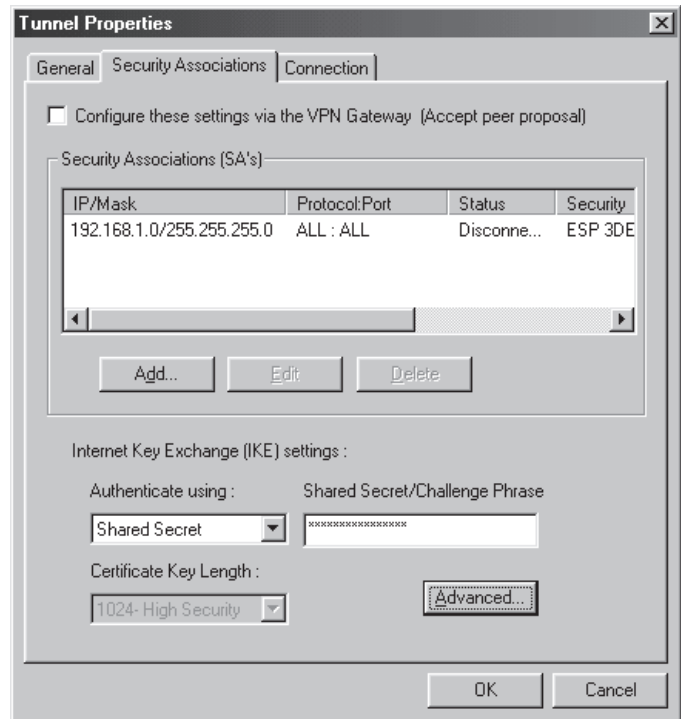
IP Address:	192.168.1.0
Subnet Mask:	255.255.255.0
Protocol:	ALL
Port:	ALL
Authentication Header:	None
Authentication:	HMAC SHA1
Encryption:	3-DES (168-bit key)
Re-key every:	5 minutes
Re-key every:	1024000000 Kbs
Perfect forward secrecy:	checked

Click OK.



Step 1.5:

Under Authenticate using: ensure that Shared Secret is selected
 Shared Secret/Challenge Phrase:
 yourpassphrasehere
 Click the Advanced... button.

**Step 1.6:**

Enter the following information:

Reconnect and authenticate every: 9 minutes

Encryption: 3-DES (168-bit key)

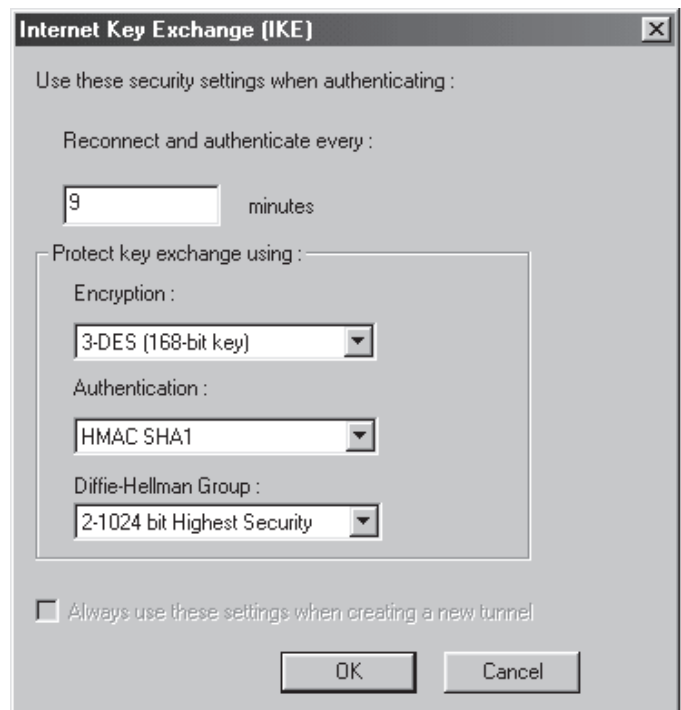
Authentication: HMAC SHA1

Diffie-Hellman Group: 2-1024 bit Highest Security

Click OK.

NOTE:

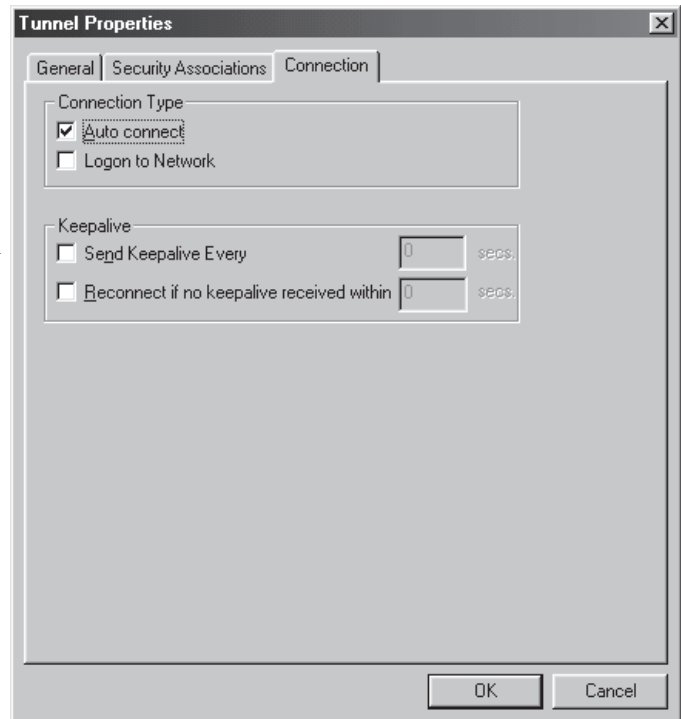
The values presented here are specific. Any changes to these remaining values will prevent the Shiva VPN client from creating and maintaining secure connections with the NetMAX.



Step 1.7:

Click the Connection tab.

If you would like to automatically connect to the NetMAX server when you start the Shiva VPN Client, place a check in Auto connect.

**Step 2.1:**

The Shiva VPN Client configuration procedure is now complete.

If all is correct, you should now have a secure connection to the NetMAX server.

The log window should display something similar to the picture below.

